

***Overview***

This is a great project for wood workers needing to get their little one out of a crib and into a bed. This toddler bed is designed to fit a standard crib mattress and will last your toddler for years before they outgrow it.

The overall dimensions of this toddler bed are 57-1/2" x 33" x 22".

Before Getting Started

Please read and understand this plan package before beginning.

Dimensions are given in the following format:
Length x Width x Height (or Thickness)

Determine what species of wood you will use to complete this project. If you are unsure which species is best suited for this project our project wood at <http://woodworkingplans.ca>. It may be able to help.

Safety

These plans assume that you have a certain level of knowledge about wood working. Since there are many ways to perform one task you must choose the best approach for yourself based on you skill level and tools. If you aren't completely comfortable using a tool, find an alternative way to make the cut.

Remember to always follow the instructions that come with your tools for safe operating procedures.

Warranty

These plans are provided “as is” and all sales are final due to the digital nature of the plans.

However we always value your thought and opinions regarding our plans. If you spot any errors with these plans or if you get stuck and need assistance contact us at dave@woodworkingplans.ca and let us know.

Tools, Wood and Hardware

All tools, hardware and wood for these projects can be found at www.woodworkingplans.ca

Toddler Bed

This toddler bed is a rather simple design that can be completed over 2 weekends. The primary method of joining the components is by using mortise and tenon joints.

Rails – Parts A, B, C, D & E:

The two side rails are 52-1/2" x 5" x 1-1/4", the length includes the tenons. Along the bottom, inside edge a 3/4" x 3/4" rabbet is milled to accept the 3/4" plywood base. All the rails are mortised into the posts

Two rail extensions (Toddler Stops) are also needed to keep the little ones from rolling out of bed. These are made from stock 26-3/4" x 4-1/2" x 3/4". They attach to the main rail with a long tongue and groove the stops 1/2" from the free end. There is also a mortise that attaches the rail extension to the post.

The head board and foot board are made up from two different thicknesses of stock.

There are two lower rails measuring 28-1/2" x 5" x 1-1/4". There two thick pieces, one for the head board and one for the foot board.

There are three upper rails measuring 28-1/2" x 4" x 3/4", two have an arched top edge. The radius of the arc is 3'-3". The grid layout on page F3 will help you lay out that arc.

Posts – Part F & G:

There are four posts in total, two for the headboard and two for the foot board. All four posts are 3-1/2" square with the head board posts being 22" tall and foot board posts being 16" tall.

The posts are made up from two pieces face glued together.

The top of the posts are shown with a 1" chamfer detail cut on the table saw using a miter gauge. The vertical edges of each post are also milled with a 1/4" chamfer. See post Detail Plan on page F5.

The layouts of the mortises are shown on pages F2 and F3 of the plan package. It is best to mill the mortises first and then detail the post. This will make milling and layout simpler.

Base _ Parts H & I:

The base that supports the mattress is made up from three pieces of $\frac{3}{4}$ " plywood. It doesn't need to be anything fancy; a standard construction grade will work fine. The ends need an arc cut into the corners to fit around the posts (see the post plan detail on page F5). Simply use some 1-1/4" screws to secure in some pre-drilled holes, it into the rabbet on the bottom of the rails.

Materials

Cut List:

Part A – 2 @ 28-1/2" x 4" x 3/4"
 Part B – 1 @ 28-1/2" x 5" x 3/4"
 Part C – 2 @ 28-1/2" x 5" x 1-1/4"
 Part D – 2 @ 52-7/16" x 5" 1-1/4"
 Part E – 2 @ 26-1/4" x 4-1/4" x 3/4"
 Part F – 4 @ 22" x 3-1/2" x 1-3/4"
 Part G – 4 @ 16" x 3-1/2" x 1-3/4"
 Part H – 1 @ 29-1/4" x 16-3/16" x 3/4"
 Part I – 1 @ 29-1/4" x 13-3/8" x 3/4"

Materials:

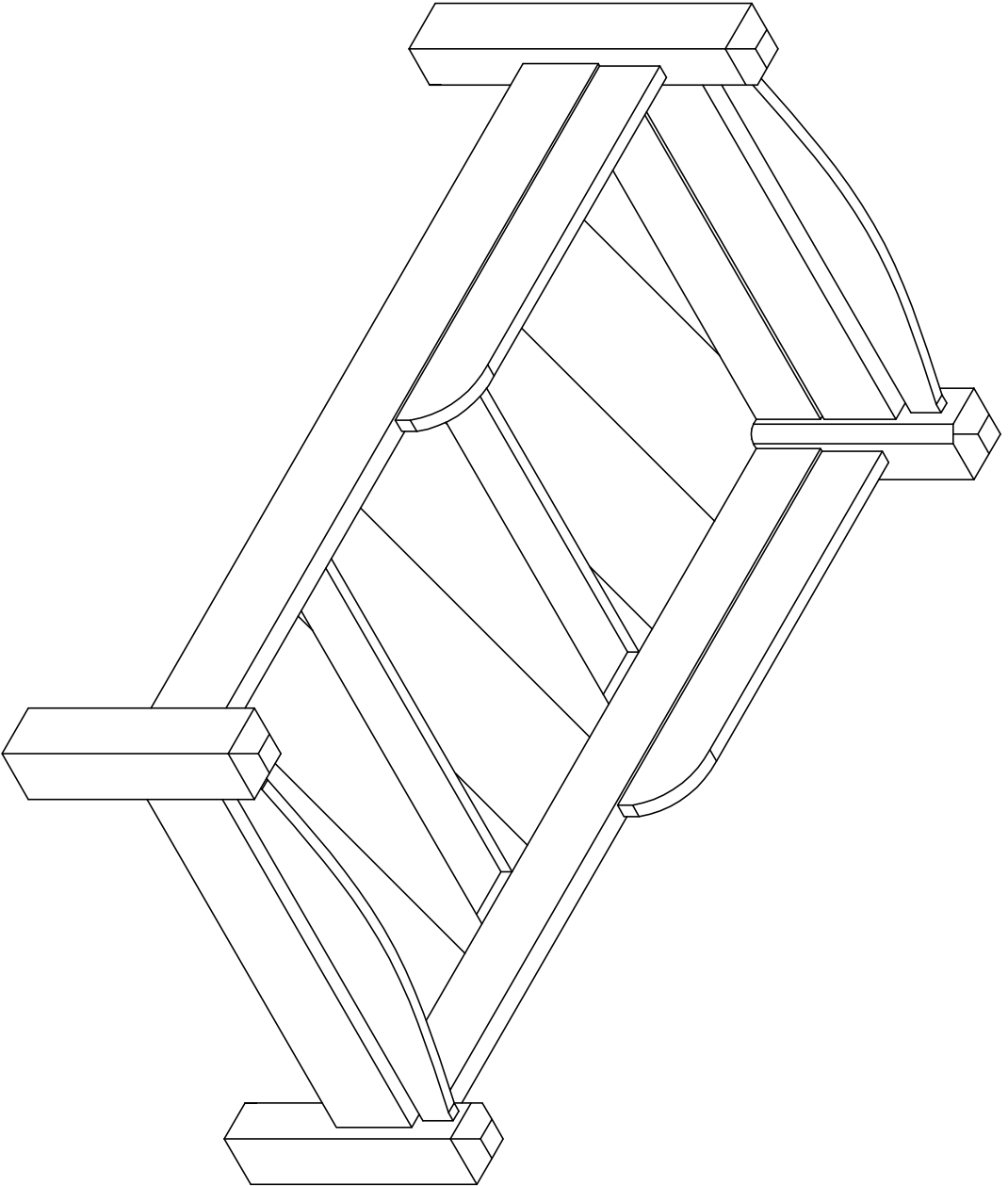
2 @ 8' x 2" x 8" (Rough Stock)
 1 @ 6' x 2" x 8" (Rough Stock)
 1 @ 10' x 1" x 8" (Rough Stock)
 1/2 Sheet 3/4" Plywood

Disclaimer

These plans make the assumption that you have a basic knowledge of wood working and wood working safety. We can make no guarantee that you have the wood working knowledge to complete this plan and thus assume no responsibility for un-satisfactory results.

Always read and understand the instructions that come with your tools. This will instruct you on the proper use of the tools.

Accurate Woodworking assumes no responsibility for damages (tools, personal, computer or any other damage) resulting from the use of this set of plans.



PAN TITLE
**TODDLER
BED**

DRAWING TITLE
**ISOMETRIC
VIEW**

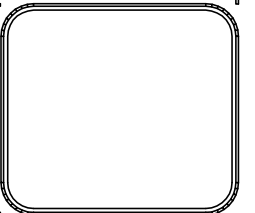
SCALE
1" = 1'-0"

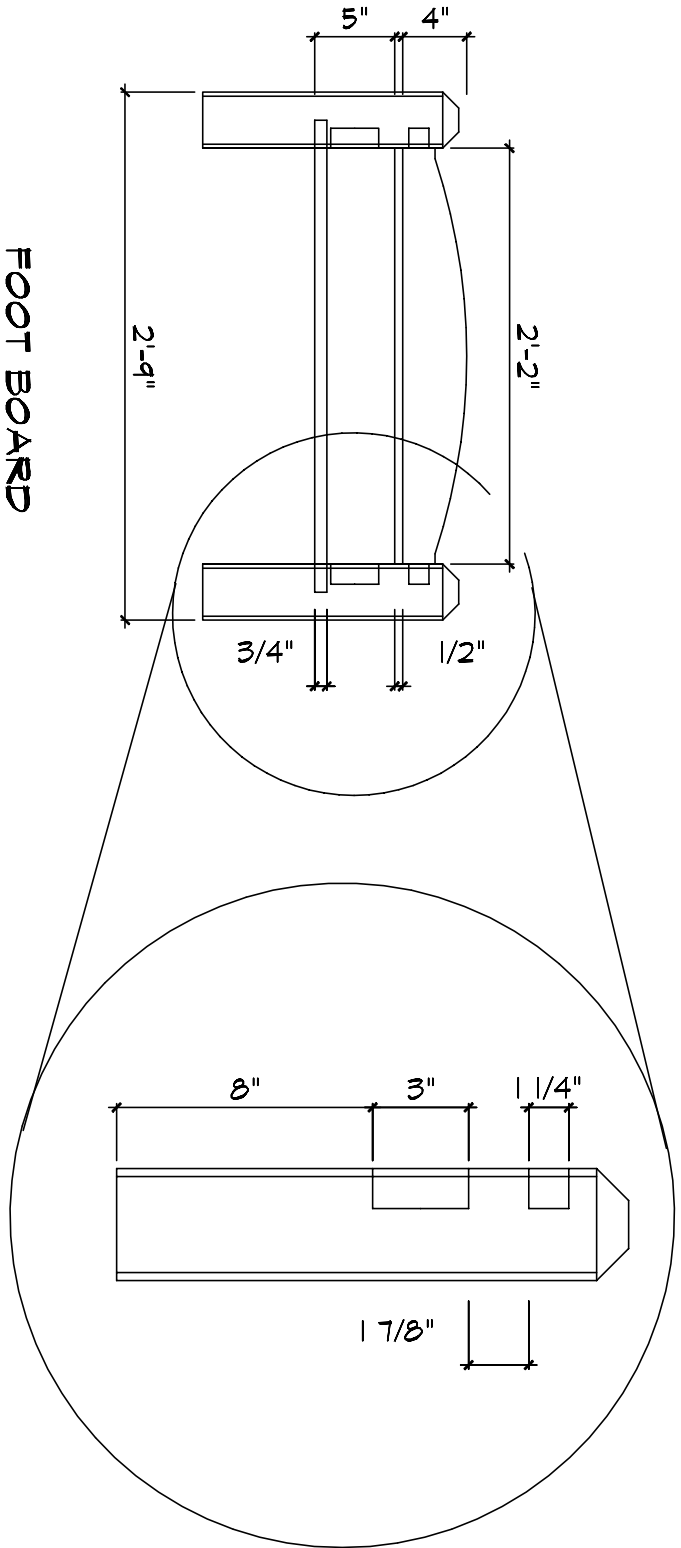
DRAWN
DBM

DATE
2008

DRAWING NO.

F1





PLAN TITLE
**TODDLER
 BED**

DRAWING TITLE
**FOOT
 BOARD**

SCALE
 1" = 1'-0"

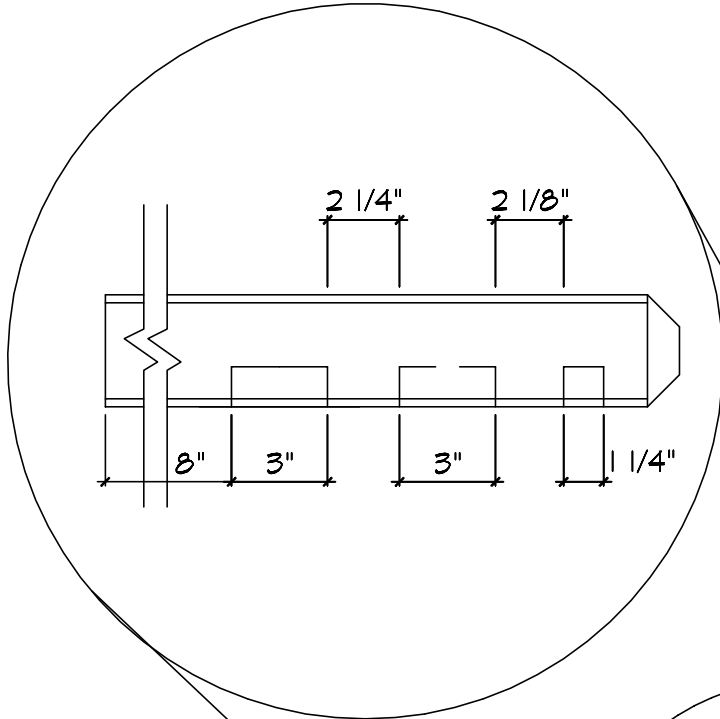
DRAWN
 DEM

DATE
 2008

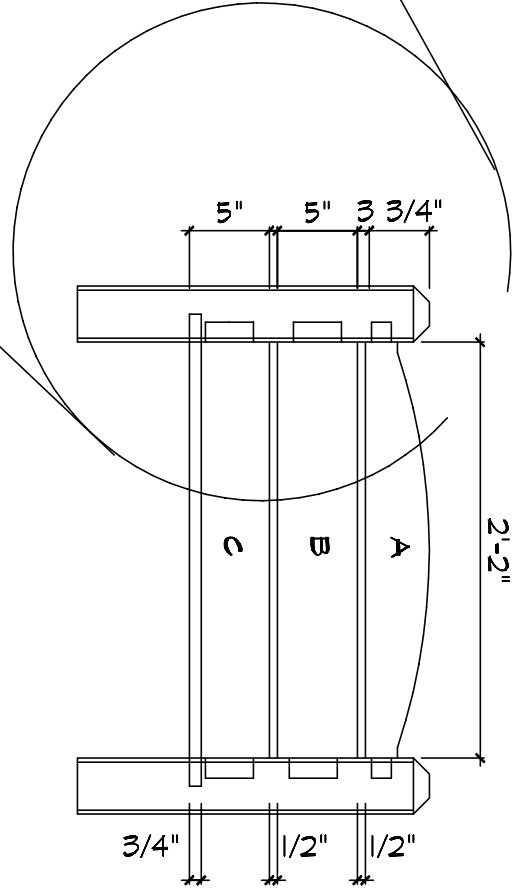
DRAWING NO.

F2

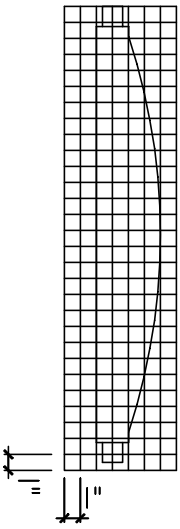
HEAD BOARD
POST DETAIL



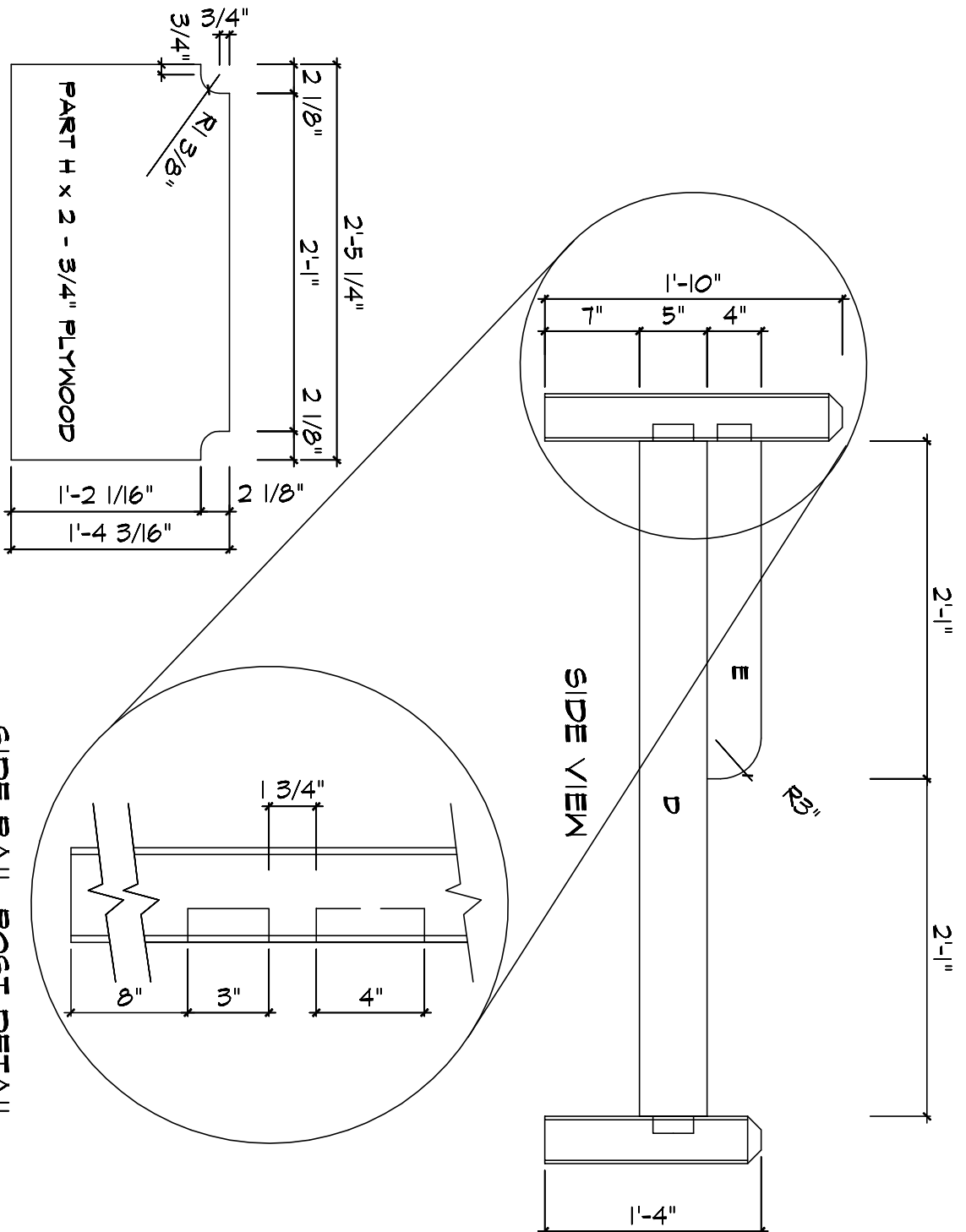
HEAD BOARD



HEAD / FOOT
BOARD DETAIL



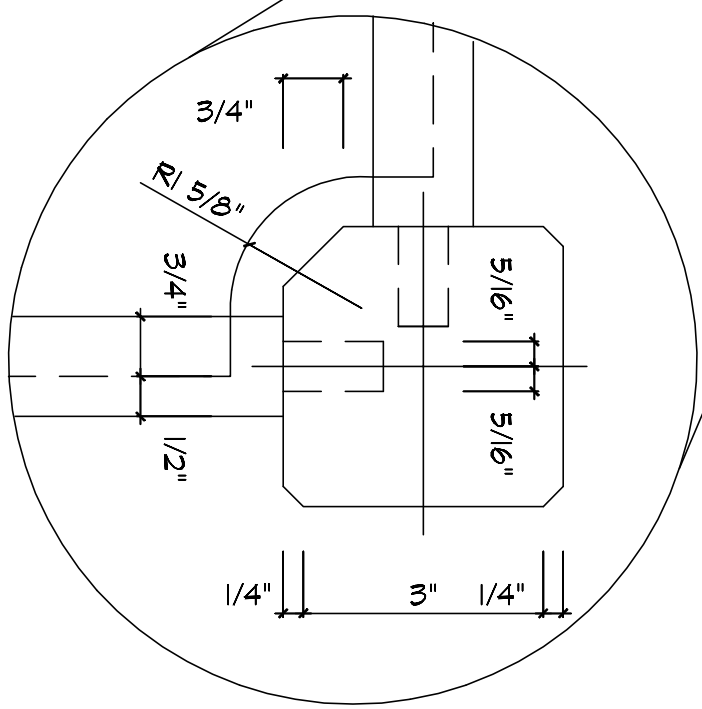
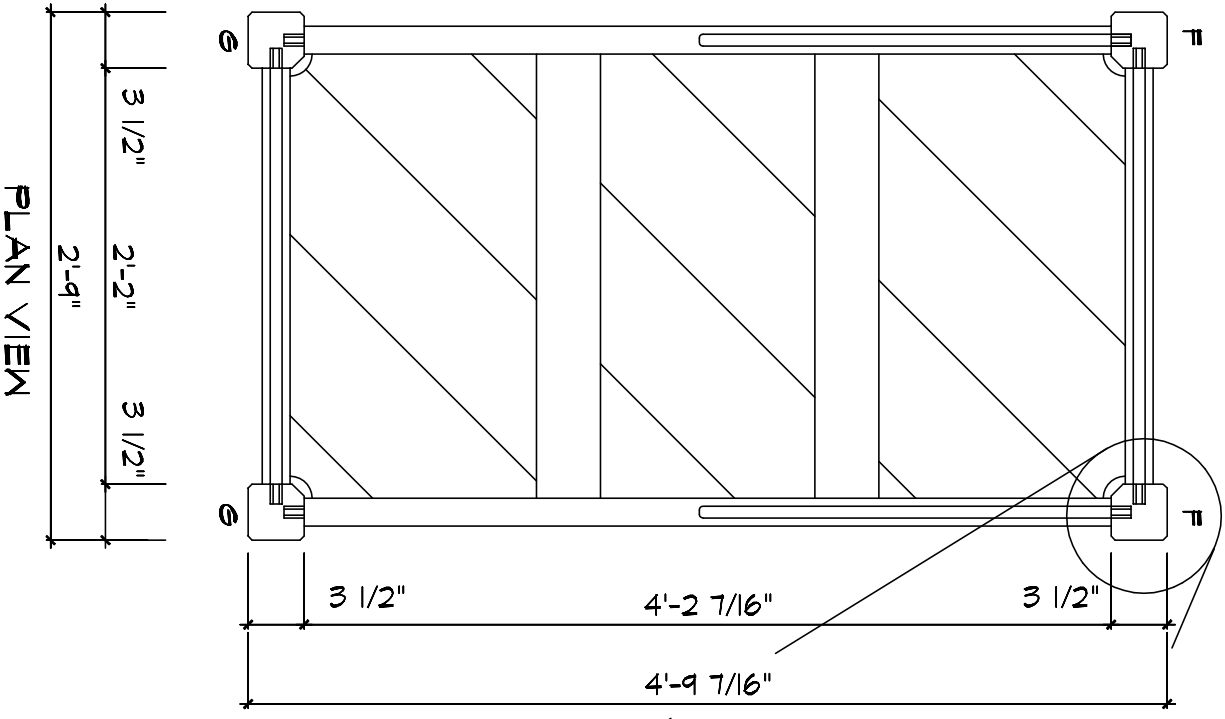
| | | | | | | | |
|--|-----------|---------------------|--------------|--------------|---------------------|-----------------------------|---------------------------|
| | F3 | DRAWING NO. 2009 | DATE 2009 | DRAWN DEM | SCALE 1" = 1'-0" | DRAWING TITLE HEAD BOARD | PLAN TITLE TODDLER BED |
|--|-----------|---------------------|--------------|--------------|---------------------|-----------------------------|---------------------------|



SIDE RAIL POST DETAIL

SIDE VIEW

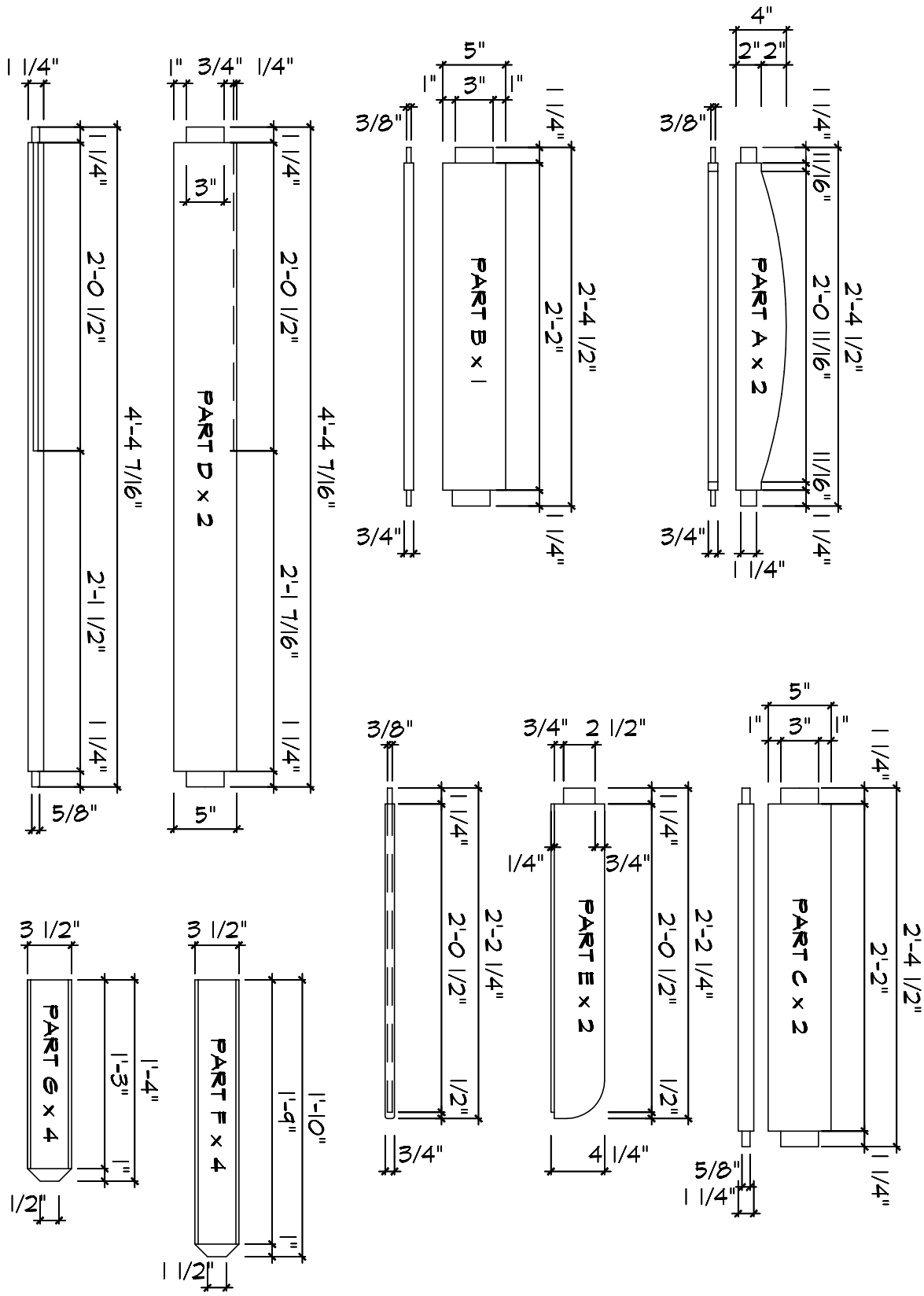
| | | | | | |
|---|--|-----------------------------|-----------------------|----------------------|----------------------------------|
| <p>PLANT TITLE TODDLER BED</p> | <p>DRAWING TITLE HEAD BOARD</p> | <p>SCALE 1" = 1'-0"</p> | <p>DRAWN DENM</p> | <p>DATE 2009</p> | <p>DRAWING NO. F4</p> |
|---|--|-----------------------------|-----------------------|----------------------|----------------------------------|



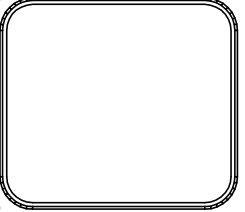
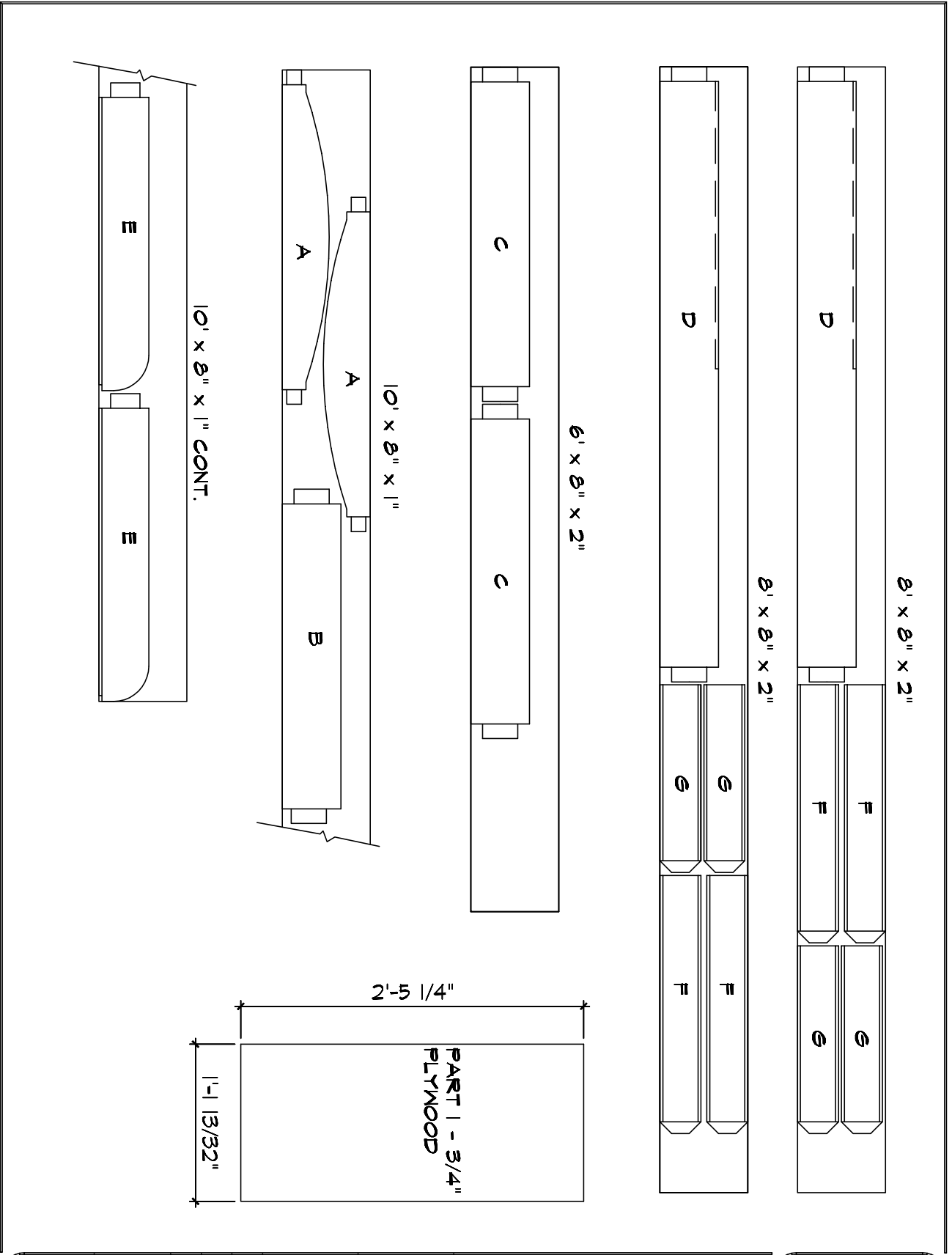
PLAN VIEW

POST DETAIL PLAN

| | | | | | | | |
|---|--|--|--|--|--|--|--|
| | | | | | | | |
| <p>PLAN TITLE TODDLER BED</p> | | | | | | | |
| <p>DRAWING TITLE PLAN VIEW</p> | | | | | | | |
| <p>SCALE 1" = 1'-0"</p> | | | | | | | |
| <p>DRAWN DEM</p> | | | | | | | |
| <p>DATE 2009</p> | | | | | | | |
| <p>DRAWING NO. F5</p> | | | | | | | |



| | |
|--|--------------------------|
| PLANT TITLE TODDLER BED | |
| DRAWING TITLE PARTS | |
| SCALE 1" = 1'-0" | DRAWN DEM |
| DATE 2009 | DRAWING NO. F6 |



PLANT TITLE
**TODDLER
 BED**

DRAWING TITLE
**MATERIALS
 LIST**

SCALE
 1" = 1'-0"

DRAWN
 DEM

DATE
 2009

DRAWING NO.

